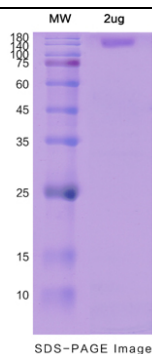


产品信息

概述 (Summary)

英文全称	Recombinant Human ITGAL protein ,C- His Tag
纯度 (Purity)	>90% as determined by SDS-PAGE
内毒素 (Endotoxin level)	<1.0 EU per µg of the protein as determined by the LAL method.
蛋白构建 (Construction)	A DNA sequence encoding the human ITGAL(Met1-Leu1090) was fused with the C-terminal His Tag
Accession #	P20701
表达宿主 (Host)	Mammalian cells
种属 (Species)	Homo sapiens (Human)
预测分子量 (Predicted Molecular Mass)	120.01kDa
制剂 (Formulation)	Supplied as solution form in PBS or lyophilized from PBS .
运输方式 (Shipping)	In general, proteins are provided as lyophilized powder/frozen liquid. They are shipped out with dry ice/blue ice unless customers require otherwise.
稳定性&储存 (Stability &Storage)	Use a manual defrost freezer and avoid repeated freeze thaw cycles. Store at 2 to 8 °C for one week . Store at -20 to -80 °C for twelve months from the date of receipt.
复溶 (Reconstitution)	Reconstitute in sterile water for a stock solution.A copy of datasheet will be provided with the products, please refer to it for details.

电泳图 (SDS-PAGE image)



背景 (Background)

分子别名 (Alternative Names)	CD11 antigen-like family member A; CD11a antigen; CD11a; CD11Aantigen CD11A (p180), lymphocyte function-associated antigen 1, alphapolypeptide;
----------------------------	--

Recombinant Human ITGAL protein ,C- His Tag

Integrin alpha L; integrin alpha-L; integrin gene promoter; integrin, alpha L (antigen CD11A (p180), lymphocyte function-associated antigen1; alpha polypeptide); ITGAL; Leukocyte adhesion glycoprotein LFA-1 alpha chain; Leukocyte function-associated molecule 1 alpha chain; LFA-1 alpha; LFA-1; LFA1A; LFA-1A; Ly-15; Ly-21; lymphocyte function-associated antigen 1

参考文献 (References)

Semmrigh, M. et al. (2005) J. Exp. Med. 201:1987.

