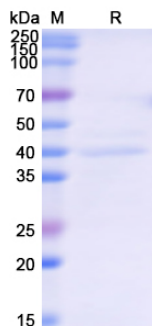


## 产品信息 ( Product Details )

### 概述 ( Summary )

英文全称	Recombinant Human MCL1 protein
纯度 ( Purity )	>90% as determined by SDS-PAGE
内毒素 ( Endotoxin level )	Please contact with the lab for this information.
蛋白构建 ( Construction )	A DNA sequence encoding the human MCL1 (Arg6-Ile328) was fused with His tag
Accession #	Q07820
表达宿主 ( Host )	E.coli
种属 ( Species )	Homo sapiens (Human)
预测分子量 ( Predicted Molecular Mass )	36.87 kDa
制剂 ( Formulation )	Lyophilized. Lyophilized from PBS pH7.4, 0.02% NLS, 1mM EDTA, 4% trehalose, 1% mannitol.
运输方式 ( Shipping )	In general, proteins are provided as lyophilized powder/frozen liquid. They are shipped out with dry ice/blue ice unless customers require otherwise.
稳定性&储存 ( Stability & Storage )	Use a manual defrost freezer and avoid repeated freeze thaw cycles.  Store at 2 to 8 °C for one week .  Store at -20 to -80 °C for twelve months from the date of receipt.
复溶 ( Reconstitution )	Reconstitute in sterile water for a stock solution.

### 电泳图 ( SDS-PAGE image )



### 背景 ( Background )

分子别名 ( Alternative Names )	Induced myeloid leukemia cell differentiation protein Mcl-1, Bcl-2-like protein 3,  Short name: Bcl2-L-3, Bcl-2-related protein EAT/mcl1, mcl1/EAT.
----------------------------	---

## Note

---

For research use only .

