

产品概述

| | |
|------------------------------|--|
| 产品名 (Product Name) | Anti MUC1 polyclonal antibody |
| 货号 (Catalog No.) | ATP225 |
| 种类 (Category) | Primary antibody |
| 宿主 (Host) | Rabbit |
| 反应种属 (Species specificity) | Human, other species was not test |
| 应用实验 (Tested applications) | Elisa: 1:4000~1:8000, IHC: 1:50~100 |
| 克隆性 (Clonality) | Polyclonal |
| 偶连物 (Conjugation) | Unconjugated |
| 免疫原 (Immunogen) | Recombinant protein of human MUC1(Ser24-Pro146) |
| 别名 | MUC-1, Breast carcinoma-associated antigen DF3, Cancer antigen 15-3, CA 15-3, Carcinoma-associated mucin, Episialin, H23AG, Krebs von den Lungen-6, KL-6, PEMT, Peanut-reactive urinary mucin, PUM, Polymorphic epithelial mucin, PEM, Tumor-associated epithelial membrane antigen, EMA, Tumor-associated mucin, CD227, Mucin-1 subunit alpha, MUC1-NT, MUC1-alpha, Mucin-1 subunit beta, MUC1-beta, MUC1-CT, PUM |
| Uniprot ID | P15941 |
| Note | For research use only . |

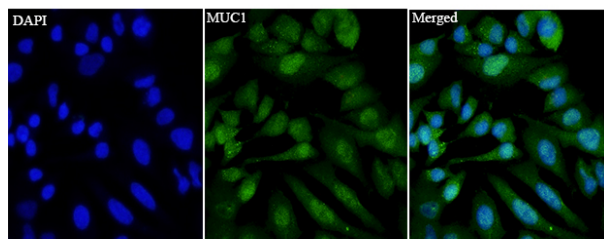
产品性能

| | |
|----------------------|---|
| 状态 (Form) | Liquid |
| 储存溶液 (Buffer) | PBS, pH7.4, containing 0.05% proclin300, 50% glycerol. |
| 存放条件 (Storage) | Use a manual defrost freezer and avoid repeated freeze thaw cycles. Store at 4°C for frequent use. Store at -20 to -80 °C for twelve months from the date of receipt. |
| 浓度 (Concentration) | 0.75mg/ml |
| 亚型 (Isotype) | IgG |
| 分子量 (MW) | 123kDa |
| 纯化方式 (Purity) | Antigen affinity purification |

应用

Elisa, IHC

产品实验图片



Immunofluorescent analysis of HeLa cells using MUC1 antibody at dilution of 1:50 and Alexa Fluor-488 conjugated Affinipure Goat anti rabbit IgG(H+L).

产品背景

The alpha subunit has cell adhesive properties. Can act both as an adhesion and an anti-adhesion protein. May provide a protective layer on epithelial cells against bacterial and enzyme attack.

The beta subunit contains a C-terminal domain which is involved in cell signaling, through phosphorylations and protein-protein interactions. Modulates signaling in ERK, SRC and NF-kappa-B pathways. In activated T-cells, influences directly or indirectly the Ras/MAPK pathway. Promotes tumor progression. Regulates TP53-mediated transcription and determines cell fate in the genotoxic stress response. Binds, together with KLF4, the PE21 promoter element of TP53 and represses TP53 activity.