

产品概述

产品名 (Product Name)	Anti TLR10 polyclonal antibody
货号 (Catalog No.)	ATP181
种类 (Category)	Primary antibody
宿主 (Host)	Rabbit
反应种属 (Species specificity)	Human, other species was not test
应用实验 (Tested applications)	ICC:1:50~200, IHC:1:50~100
克隆性 (Clonality)	Polyclonal
偶连物 (Conjugation)	Unconjugated
免疫原 (Immunogen)	Recombinant protein of human TLR10(Lys622-Asn776).
别名	Toll-like receptor 10, TLR10, CD290
Uniprot ID	Q9BXR5

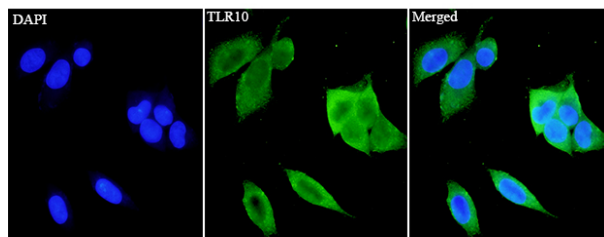
产品性能

状态 (Form)	Liquid
储存溶液 (Buffer)	PBS, pH7.4, containing 0.05% proclin300, 50% glycerol.
存放条件 (Storage)	Use a manual defrost freezer and avoid repeated freeze thaw cycles. Store at 4°C for frequent use. Store at -20 to -80 °C for twelve months from the date of receipt.
浓度 (Concentration)	0.89mg/ml
亚型 (Isotype)	IgG
分子量 (MW)	92kDa
纯化方式 (Purity)	Antigen affinity purification

应用

ICC, IHC

产品实验图片



Immunofluorescent analysis of A2780 cells using TLR10 antibody at dilution of 1:50 and Alexa Fluor-488 conjugated Affinipure Goat anti rabbit IgG(H+L).

产品背景

The protein encoded by this gene is a member of the Toll-like receptor (TLR) family which plays a fundamental role in pathogen recognition and activation of innate immunity. TLRs are highly conserved from *Drosophila* to humans and share structural and functional similarities. They recognize pathogen-associated molecular patterns (PAMPs) that are expressed on infectious agents, and mediate the production of cytokines necessary for the development of effective immunity. The various TLRs exhibit different patterns of expression. This gene is most highly expressed in lymphoid tissues such as spleen, lymph node, thymus, and tonsil. Multiple alternatively spliced transcript variants which encode different protein isoforms have been found for this gene.

