

## 产品概述

产品名 ( Product Name )	Anti KRT15 polyclonal antibody
货号 ( Catalog No. )	ATP161
种类 ( Category )	Primary antibody
宿主 ( Host )	Rabbit
反应种属 ( Species specificity )	Human, other species was not test
应用实验 ( Tested applications )	WB: 1:2000~1:8000, ICC: 1:50~200, IHC: 1:50~100
克隆性 ( Clonality )	Polyclonal
偶连物 ( Conjugation )	Unconjugated
免疫原 ( Immunogen )	Recombinant protein of human KRT15(Ala238-Ser450).
别名	Keratin, type I cytoskeletal 15, KRT15, KRTB, Keratin-15, K15, CK-15, Cytokeratin-15
Uniprot ID	P19012

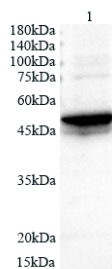
## 产品性能

状态 ( Form )	Liquid
储存溶液 ( Buffer )	PBS, pH7.4, containing 0.05% proclin300, 50% glycerol.
存放条件 ( Storage )	Use a manual defrost freezer and avoid repeated freeze thaw cycles. Store at 4°C for frequent use. Store at -20 to -80 °C for twelve months from the date of receipt.
浓度 ( Concentration )	0.64mg/ml
亚型 ( Isotype )	IgG
分子量 ( MW )	49kDa
纯化方式 ( Purity )	Antigen affinity purification

## 应用

WB, ICC, IHC

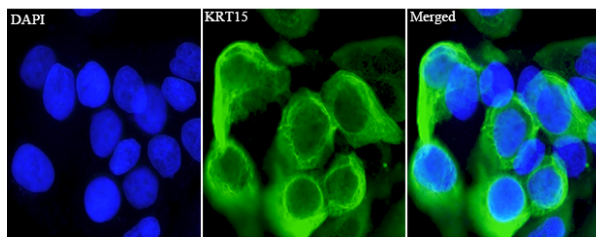
## 产品实验图片



Lysate: 20 µg/lane  
Lane 1: K150 cell line

Predicted band size: 49 kDa  
Observed band size: 49 kDa

Various lysates were subjected to SDS PAGE followed by western blot with KRT15 antibody at dilution of 1:1000.



Immunofluorescent analysis of HACAT cells using KRT15 antibody at dilution of 1:50 and Alexa Fluor-488 conjugated Affinipure Goat anti rabbit IgG(H+L).

## 产品背景

Keratins are a large family of proteins that form the intermediate filament cytoskeleton of epithelial cells, which are classified into two major sequence types. Type I keratins are a group of acidic intermediate filament proteins, including K9–K23, and the hair keratins Ha1–Ha8. Type II keratins are the basic or neutral counterparts to the acidic type I keratins, including K1–K8, and the hair keratins, Hb1–Hb6. Keratin 15 is a type I cytokeratin. It is found in some progenitor basal cells within complex epithelia.