

## 产品概述

产品名 ( Product Name )	Anti B2M polyclonal antibody
货号 ( Catalog No. )	ATP159
种类 ( Category )	Primary antibody
宿主 ( Host )	Rabbit
反应种属 ( Species specificity )	Human, other species was not test
应用实验 ( Tested applications )	ICC:1:50~200, IHC:1:50~100
克隆性 ( Clonality )	Polyclonal
偶连物 ( Conjugation )	Unconjugated
免疫原 ( Immunogen )	Recombinant protein of human b2M(Gln22-Met119).
别名	B2M, Beta-2-microglobulin
Uniprot ID	P61769

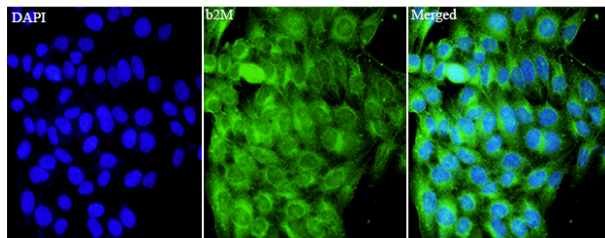
## 产品性能

状态 ( Form )	Liquid
储存溶液 ( Buffer )	PBS, pH7.4, containing 0.05% proclin300, 50% glycerol.
存放条件 ( Storage )	Use a manual defrost freezer and avoid repeated freeze thaw cycles. Store at 4°C for frequent use. Store at -20 to -80 °C for twelve months from the date of receipt.
浓度 ( Concentration )	0.37mg/ml
亚型 ( Isotype )	IgG
分子量 ( MW )	14kDa
纯化方式 ( Purity )	Antigen affinity purification

## 应用

ICC, IHC

## 产品实验图片



Immunofluorescent analysis of HepG2 cells using  $\beta$ 2M antibody at dilution of 1:50 and Alexa Fluor-488 conjugated Affinipure Goat anti rabbit IgG(H+L).

## 产品背景

Beta-2-microglobulin (B2M) is a component of MHC class I molecules, which are present on the surface of nearly all nucleated cells. It can be found in body fluids under physiologic conditions as a result of shedding from cell surfaces or intracellular release. B2M has various biological functions, including antigen presentation. Investigations reveal that increased synthesis and release of B2M are present in several malignant diseases.

