

## 产品概述

产品名 ( Product Name )	Anti IRS1 polyclonal antibody
货号 ( Catalog No. )	ATP158
种类 ( Category )	Primary antibody
宿主 ( Host )	Rabbit
反应种属 ( Species specificity )	Human, other species was not test
应用实验 ( Tested applications )	ICC:1:50~200, IHC:1:50~100
克隆性 ( Clonality )	Polyclonal
偶连物 ( Conjugation )	Unconjugated
免疫原 ( Immunogen )	Recombinant protein of human IRS1(Pro4-Arg267).
别名	IRS1, Insulin receptor substrate 1, IRS-1
Uniprot ID	P35568

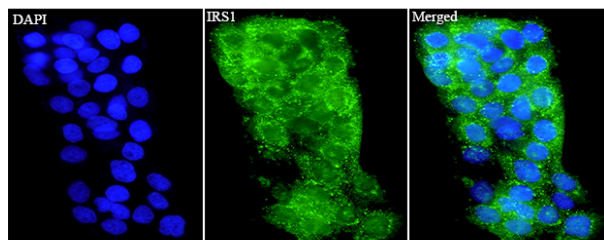
## 产品性能

状态 ( Form )	Liquid
储存溶液 ( Buffer )	PBS, pH7.4, containing 0.05% proclin300, 50% glycerol.
存放条件 ( Storage )	Use a manual defrost freezer and avoid repeated freeze thaw cycles. Store at 4°C for frequent use. Store at -20 to -80 °C for twelve months from the date of receipt.
浓度 ( Concentration )	0.38mg/ml
亚型 ( Isotype )	IgG
分子量 ( MW )	132kDa
纯化方式 ( Purity )	Antigen affinity purification

## 应用

ICC, IHC

## 产品实验图片



Immunofluorescent analysis of HACAT cells using IRS1 antibody at dilution of 1:50 and Alexa Fluor-488 conjugated Affinipure Goat anti rabbit IgG(H+L).

## 产品背景

Insulin receptor substrate 1 (IRS1) was the first cloned and characterized member of the IRS family which are involved in insulin receptor (IR) and insulin-like growth factor I receptor (IGF-IR) signaling. IRS1 is phosphorylated by insulin receptor tyrosine kinase and is involved in various cellular processes including DNA repair fidelity, transcriptional activity, and cell growth can support tumor development and progression. Mutations in this gene are associated with type II diabetes and susceptibility to insulin resistance. IRS1 has a predicted molecular weight of 132 kDa, however, as a result of its extensive serine phosphorylation it separates on a SDS gel as a band of approximately 160-185 kDa.