

产品概述

| | |
|------------------------------|---|
| 产品名 (Product Name) | Anti ISR polyclonal antibody |
| 货号 (Catalog No.) | ATP141 |
| 种类 (Category) | Primary antibody |
| 宿主 (Host) | Rabbit |
| 反应种属 (Species specificity) | Human, other species was not test |
| 应用实验 (Tested applications) | WB: 1:2000~1:8000, ICC: 1:50~200, IHC: 1:50~100 |
| 克隆性 (Clonality) | Polyclonal |
| 偶连物 (Conjugation) | Unconjugated |
| 免疫原 (Immunogen) | Recombinant protein of human INSR(Ser763-Lys956). |
| 别名 | CD220, HHF5, human insulin receptor, Insr, INSR, Insulin receptor subunit beta, IR 1, IR, IR-1, IR1 |
| Uniprot ID | P06213 |

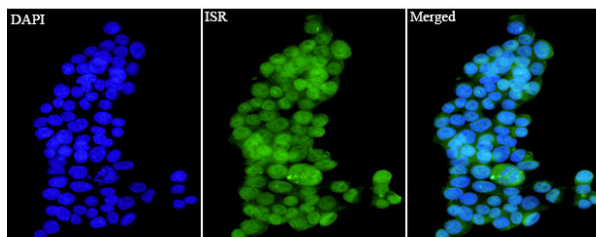
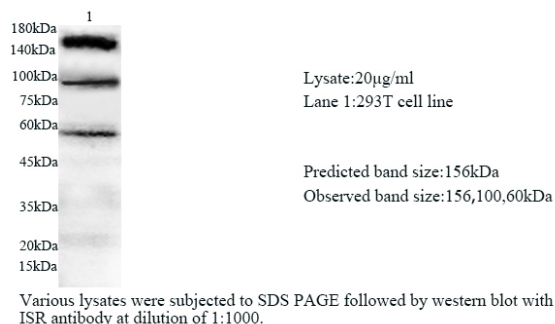
产品性能

| | |
|----------------------|---|
| 状态 (Form) | Liquid |
| 储存溶液 (Buffer) | PBS, pH7.4, containing 0.05% proclin300, 50% glycerol. |
| 存放条件 (Storage) | Use a manual defrost freezer and avoid repeated freeze thaw cycles. Store at 4°C for frequent use. Store at -20 to -80 °C for twelve months from the date of receipt. |
| 浓度 (Concentration) | 0.69mg/ml |
| 亚型 (Isotype) | IgG |
| 分子量 (MW) | 156kDa |
| 纯化方式 (Purity) | Antigen affinity purification |

应用

WB, ICC, IHC

产品实验图片



Immunofluorescent analysis of 293T cells using ISR antibody at dilution of 1:50 and Alexa Fluor-488 conjugated Affinipure Goat anti rabbit IgG(H+L).

产品背景

The biological effects of insulin are mediated by a membrane spanning cell surface receptor that has been shown to consist of disulfide-linked 135-kDa and 95-kDa alpha- and beta-subunits that are cleaved products of a common precursor. Binding of insulin to the receptor extracellular domain results in intracellular activation of a tyrosine-specific kinase activity and the generation of signals that determine the cellular response (PMID: 2369896). This antibody raised against 980-1382aa of human insulin receptor can recognize full-length insulin receptor precursor and insulin receptor beta subunit.