

产品概述

产品名 (Product Name)	Anti CTLA4 polyclonal antibody
货号 (Catalog No.)	ATP107
种类 (Category)	Primary antibody
宿主 (Host)	Rabbit
反应种属 (Species specificity)	Human, other species was not test
应用实验 (Tested applications)	ICC:1:50~200, IHC:1:50~100
克隆性 (Clonality)	Polyclonal
偶连物 (Conjugation)	Unconjugated
免疫原 (Immunogen)	Recombinant protein of human CTLA4(Ala37-Asp161).
别名	Cytotoxic T-lymphocyte protein 4, Cytotoxic T-lymphocyte-associated antigen 4, CTLA-4, CD152
Uniprot ID	P16410

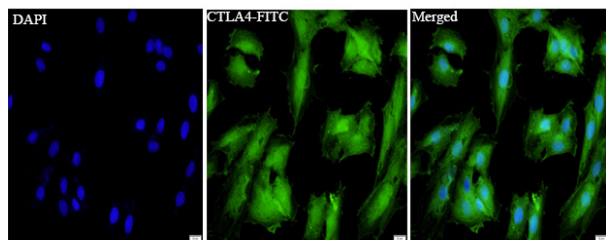
产品性能

状态 (Form)	Liquid
储存溶液 (Buffer)	PBS, pH7.4, containing 0.05% proclin300, 50% glycerol.
存放条件 (Storage)	Use a manual defrost freezer and avoid repeated freeze thaw cycles. Store at 4°C for frequent use. Store at -20 to -80 °C for twelve months from the date of receipt.
浓度 (Concentration)	0.84mg/ml
亚型 (Isotype)	IgG
分子量 (MW)	21kDa
纯化方式 (Purity)	Antigen affinity purification

应用

ICC, IHC

产品实验图片



Immunofluorescent analysis of H929 cells using CTLA4 antibody at dilution of 1:100 and Alexa Fluor-488 conjugated Affinipure Goat anti rabbit IgG(H+L).

产品背景

This gene is a member of the immunoglobulin superfamily and encodes a protein which transmits an inhibitory signal to T cells. The protein contains a V domain, a transmembrane domain, and a cytoplasmic tail. Alternate transcriptional splice variants, encoding different isoforms, have been characterized. The membrane-bound isoform functions as a homodimer interconnected by a disulfide bond, while the soluble isoform functions as a monomer. Mutations in this gene have been associated with insulin-dependent diabetes mellitus, Graves disease, Hashimoto thyroiditis, celiac disease, systemic lupus erythematosus, thyroid-associated orbitopathy, and other autoimmune diseases.

