

## 产品概述

产品名 ( Product Name )	Anti MYH1 polyclonal antibody
货号 ( Catalog No. )	ATP096
种类 ( Category )	Primary antibody
宿主 ( Host )	Rabbit
反应种属 ( Species specificity )	Human, other species was not test
应用实验 ( Tested applications )	ICC:1:50~200, IHC:1:50~100
克隆性 ( Clonality )	Polyclonal
偶连物 ( Conjugation )	Unconjugated
免疫原 ( Immunogen )	Recombinant protein of human MYH1(Pro842-Lys967).
别名	Myosin heavy chain IIx/d, Myosin heavy chain 2x, Myosin heavy chain, skeletal muscle, adult 1, Myosin-1, MYH1, MyHC-IIx/d, MyHC-2x, Myosin heavy chain 1
Uniprot ID	P12882

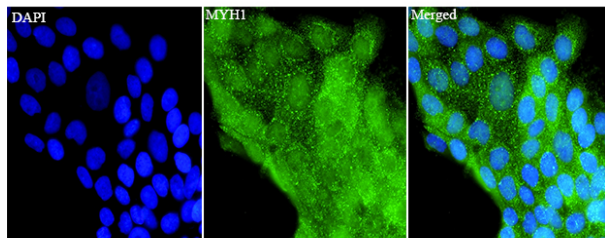
## 产品性能

状态 ( Form )	Liquid
储存溶液 ( Buffer )	PBS, pH7.4, containing 0.05% proclin300, 50% glycerol.
存放条件 ( Storage )	Use a manual defrost freezer and avoid repeated freeze thaw cycles. Store at 4°C for frequent use. Store at -20 to -80 °C for twelve months from the date of receipt.
浓度 ( Concentration )	0.46mg/ml
亚型 ( Isotype )	IgG
分子量 ( MW )	223kDa
纯化方式 ( Purity )	Antigen affinity purification

## 应用

ICC, IHC

## 产品实验图片



Immunofluorescent analysis of HACAT cells using MYH1 antibody at dilution of 1:50 and Alexa Fluor-488 conjugated Affinipure Goat anti rabbit IgG(H+L).

## 产品背景

MYH1 (MyHC-2x) encodes the IIX isoform of myosin heavy chain (MyHC). Myosin is a large, ubiquitous, motor protein that generates force through its interaction with actin, thus involving it in a number of cellular processes including cytokinesis, karyokinesis, cell migration, and muscle contraction. Muscle fibers can be divided as type 1 (slow) and type 2 (fast). MYH1 belongs to type 2.