

产品概述

产品名 (Product Name)	Anti LAMP2 polyclonal antibody
货号 (Catalog No.)	ATP072
种类 (Category)	Primary antibody
宿主 (Host)	Rabbit
反应种属 (Species specificity)	Human, other species was not test
应用实验 (Tested applications)	WB: 1:2000~1:8000, ICC: 1:50~200, IHC: 1:50~100
克隆性 (Clonality)	Polyclonal
偶连物 (Conjugation)	Unconjugated
免疫原 (Immunogen)	Recombinant protein of human LAMP2(Leu29-Gln366).
别名	Lysosome-associated membrane glycoprotein 2, LAMP-2, CD107 antigen-like family member B, CD107b, LGP-96
Uniprot ID	P13473

产品性能

状态 (Form)	Liquid
储存溶液 (Buffer)	PBS, pH 7.4, containing 0.05% proclin300, 50% glycerol.
存放条件 (Storage)	Use a manual defrost freezer and avoid repeated freeze thaw cycles. Store at 4°C for frequent use. Store at -20 to -80 °C for twelve months from the date of receipt.
浓度 (Concentration)	0.62mg/ml
亚型 (Isotype)	IgG
分子量 (MW)	45kDa
纯化方式 (Purity)	Antigen affinity purification

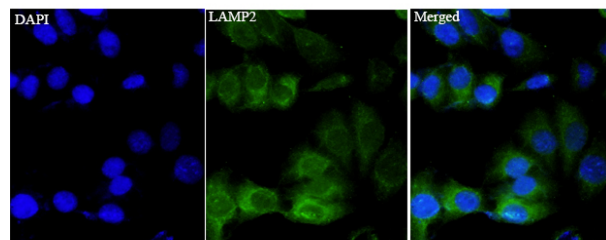
应用

WB, ICC, IHC

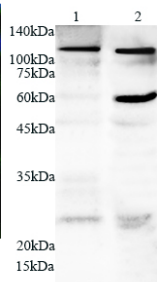
产品实验图片

Catalog Number: ATP072

Anti LAMP2 polyclonal antibody



Immunofluorescent analysis of HepG2 cells using LAMP2 antibody at dilution of 1:100 and Alexa Fluor-488 conjugated Affinipure Goat anti rabbit IgG(H+L).



Lysate: 20µg/ml
Lane 1: HepG2 cell line
Lane 2: 293T cell line

Predicted band size: 45kDa
Observed band size: 120kDa

Various lysates were subjected to SDS PAGE followed by western blot with LAMP2 antibody at dilution of 1:1000.

产品背景

Lysosomal-associated membrane protein 2 (LAMP2, synonyms: LAMPB, CD107b) is a member of a family of membrane glycoproteins. This glycoprotein provides selectins with carbohydrate ligands. LAMP2 may play a role in tumor cell metastasis. It may also function in the protection, maintenance, and adhesion of the lysosome. Prior to posttranslational modification, LAMP2 is a ~45 kDa polypeptide. Mature, functional LAMP2 is extensively glycosylated with a variety of different N linked and O linked oligosaccharides.