

## 产品概述

产品名 ( Product Name )	Anti BCL2L1 polyclonal antibody
货号 ( Catalog No. )	ATP010
种类 ( Category )	Primary antibody
宿主 ( Host )	Rabbit
反应种属 ( Species specificity )	Human, other species was not test
应用实验 ( Tested applications )	ICC:1:50~200, IHC:1:50~100
克隆性 ( Clonality )	Polyclonal
偶连物 ( Conjugation )	Unconjugated
免疫原 ( Immunogen )	Recombinant protein of human BCL2L1(Met1-Lys233).
别名	Bcl-2-like protein 1, Bcl2-L-1, Apoptosis regulator Bcl-X, BCL2L1, BCL2L, BCLX
Uniprot ID	Q07817

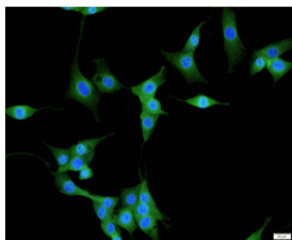
## 产品性能

状态 ( Form )	Liquid
储存溶液 ( Buffer )	PBS, pH7.4, containing 0.05% proclin300, 50% glycerol.
存放条件 ( Storage )	Use a manual defrost freezer and avoid repeated freeze thaw cycles. Store at 4°C for frequent use. Store at -20 to -80 °C for twelve months from the date of receipt.
浓度 ( Concentration )	0.5mg/ml
亚型 ( Isotype )	IgG
分子量 ( MW )	26kDa
纯化方式 ( Purity )	Antigen affinity purification

## 应用

ICC, IHC

## 产品实验图片



Immunofluorescent analysis of NIH/3T3 cells using BCL2L1 antibody at dilution of 1:50 and Alexa Fluor-488 conjugated Affinipure Goat anti rabbit IgG(H+L).

## 产品背景

---

BCL2L1 is a member of the BCL-2 protein family. BCL2L1 is expressed as three isoforms, Bcl-X(L), Bcl-X(s) and Bcl-X(beta), and is located at the outer mitochondrial membrane. The Bcl-X(L) isoform is a 233 amino acid protein, acting as an apoptotic inhibitor. Bcl-XL can form heterodimers with BAX, BAK or BCL2, and the heterodimerization with BAX does not seem to be required for anti-apoptotic activity. The Bcl-X(s) isoform is a shorter variant that is 178 amino acids in length and lacks a 63 amino acid region (amino acids 126-188), acting as an apoptotic activator. Bcl-X(beta) is a 227 amino acid protein. This antibody can recognize Bcl-XL, Bcl-X(s) and Bcl-X(Beta).

