

产品概述

产品名 (Product Name)	Anti CCND1 polyclonal antibody
货号 (Catalog No.)	ATP008
种类 (Category)	Primary antibody
宿主 (Host)	Rabbit
反应种属 (Species specificity)	Human, other species was not test
应用实验 (Tested applications)	ICC:1:50~200, IHC:1:50~100
克隆性 (Clonality)	Polyclonal
偶连物 (Conjugation)	Unconjugated
免疫原 (Immunogen)	Recombinant protein of human CCND1(Lue65-Arg245).
别名	G1/S-specific cyclin-D1, CCND1, B-cell lymphoma 1 protein, BCL-1, BCL-1 oncogene, PRAD1 oncogene
Uniprot ID	P24385

产品性能

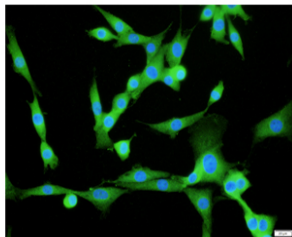
状态 (Form)	Liquid
储存溶液 (Buffer)	PBS, pH7.4, containing 0.05% proclin300, 50% glycerol.
存放条件 (Storage)	Use a manual defrost freezer and avoid repeated freeze thaw cycles. Store at 4°C for frequent use. Store at -20 to -80 °C for twelve months from the date of receipt.
浓度 (Concentration)	0.63mg/ml
亚型 (Isotype)	IgG
分子量 (MW)	34kDa
纯化方式 (Purity)	Antigen affinity purification

应用

ICC, IHC

产品实验图片





Immunofluorescent analysis of NIH/3T3 cells using CCND1 antibody at dilution of 1:50 and Alexa Fluor-488 conjugated Affinipure Goat anti rabbit IgG(H+L).

产品背景

CCND1 (cyclin D1), also known as PRAD1 or BCL1, belongs to the highly conserved cyclin family, whose members are characterized by a dramatic periodicity in protein abundance throughout the cell cycle. CCND1 forms a complex with and functions as a regulatory subunit of CDK4 or CDK6, whose activity is required for cell cycle G1/S transition. The CCND1 gene, located on 11q13 has been reported to be overexpressed in mantle cell lymphoma (MCL) due to the chromosomal translocation. CCND1 has been shown to interact with tumor suppressor protein Rb and the expression of this gene is regulated positively by Rb. Over-expression of CCND1 is known to correlate with the early onset of cancer and risk of tumor progression and metastasis.

