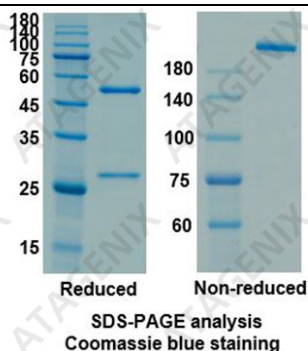


## 产品信息

货号 (Catalog No.)	ATAD00196
通用名INN	Siltuximab
纯度(Purity)	>95%

## 电泳图 (SDS-PAGE image)



浓度(Concentration)	1mg/ml
Formulation	PBS buffer PH7.5
Source	CHO cells
内毒素(Endotoxin level)	Please contact with the lab for this information.

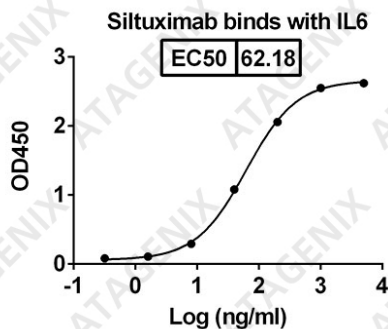
## 生物活性

产品描述(Description)	<p>Siltuximab is a chimeric (human-mouse) monoclonal immunoglobulin G1-kappa antibody produced in a Chinese hamster ovary (CHO) cell line by recombinant DNA technology. Siltuximab prevents the binding of IL-6 to soluble and membrane-bound IL-6 receptors by forming high affinity complexes with human interleukin-6 (IL-6). Its use is indicated for the treatment of adult patients with multicentric Castleman's disease (MCD) who are human immunodeficiency virus (HIV) negative and human herpesvirus-8 (HHV-8) negative. MCD is a rare blood disorder caused by dysregulated IL-6 production, proliferation of lymphocytes, and subsequent enlargement of the lymph nodes. It is administered as a 1 hour intravenous infusion every 3 weeks.</p>
别名(Alternative names)	CLLB8, CINTO 328
靶点;物种(Specificity target name;species)	IL6[Homo sapiens]
种类(Species)	Humanized

受体鉴定(Receptor identification)

IgG1-kappa

## 活性验证 ( 图片、数据 ) (Bioactivity)



## 化学信息

分子量(MV)

145000.00 Da

CAS

541502-14-1

存储条件(Storage)

Use a manual defrost freezer and avoid repeated freeze-thaw cycles.

Store at +4°C short term (1-2 weeks).

Store at -20 °C 12 months.

Store at -80°C long term.

Note

For research use only .