

产品概述

产品名 (Product Name)	Cytokeratin 6 mouse monoclonal antibody
货号 (Catalog No.)	ATDA00125
种类 (Category)	Primary antibody
宿主 (Host)	Mouse
反应种属 (Species specificity)	This antibody detects endogenous levels of human Cytokeratin 6. Heat-induced epitope retrieval (HIER) TRIS-EDTA of pH8.0 was highly recommended as antigen repair method in paraffin section
应用实验 (Tested applications)	IHC-p, WB
克隆性 (Clonality)	Monoclonal
免疫原 (Immunogen)	Synthesized peptide derived from human Cytokeratin 6.
别名	Keratin, type II cytoskeletal 6A, Cytokeratin-6A(CK-6A), Cytokeratin-6D(CK-6D), Keratin-6A(K6A), Type-II keratin Kb6
Uniprot ID	P02538

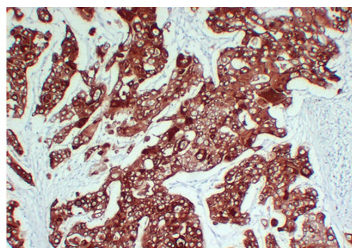
产品性能

状态 (Form)	Liquid
储存溶液 (Buffer)	Liquid in PBS containing 50% glycerol, 0.5% BSA and 0.02% sodium azide.
存放条件 (Storage)	Stored at -20°C. Avoid repeated freeze-thaw cycles.
浓度 (Concentration)	1 mg/ml
亚型 (Isotype)	IgG1, Kappa

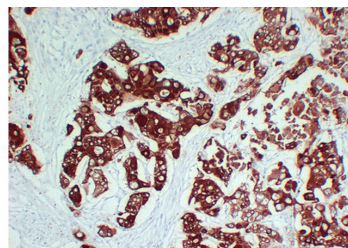
应用

IHC-p: 1:100-1:500; WB: 1:500-1:2000

产品实验图片



Immunohistochemical analysis of paraffin-embedded Lung squamous cell carcinoma. 1, Antibody was diluted at 1:200(4°C overnight). 2, TRIS-EDTA of pH8.0 was used for antigen retrieval. 3, Secondary antibody was diluted at 1:200(room temperature, 30min).



Immunohistochemical analysis of paraffin-embedded Lung squamous cell carcinoma. 1, Antibody was diluted at 1:200(4°C overnight). 2, TRIS-EDTA of pH8.0 was used for antigen retrieval. 3, Secondary antibody was diluted at 1:200(room temperature, 30min).

产品背景

Keratin 6A(KRT6A) Homo sapiens The protein encoded by this gene is a member of the keratin gene family. The type II cytokeratins consist of basic or neutral proteins which are arranged in pairs of heterotypic keratin chains coexpressed during differentiation of simple and stratified epithelial tissues. As many as six of this type II cytokeratin (KRT6) have been identified; the multiplicity of the genes is attributed to successive gene duplication events. The genes are expressed with family members KRT16 and/or KRT17 in the filiform papillae of the tongue, the stratified epithelial lining of oral mucosa and esophagus, the outer root sheath of hair follicles, and the glandular epithelia. This KRT6 gene in particular encodes the most abundant isoform. Mutations in these genes have been associated with pachyonychia congenita.