

## 产品概述

产品名 ( Product Name )	E-Cadherin mouse monoclonal antibody
货号 ( Catalog No. )	ATDA00111
种类 ( Category )	Primary antibody
宿主 ( Host )	Mouse
反应种属 ( Species specificity )	This antibody detects endogenous levels of human Cadherin-1 (CAM 120/80) (Epithelial cadherin) (E-cadherin) (Uvomorulin) (CD antigen CD324) [Cleaved into: E-Cad/CTF1; E-Cad/CTF2; E-Cad/CTF3]. Heat-ind
应用实验 ( Tested applications )	IHC-p
克隆性 ( Clonality )	Monoclonal
免疫原 ( Immunogen )	Synthesized peptide derived from human E-Cadherin
别名	Cadherin-1, CAM 120/80, Epithelial cadherin, E-cadherin, CD antigen CD324, cleaved into: E-Cad/CTF1, E-Cad/CTF2, E-Cad/CTF3
Uniprot ID	P12830
Note	For research use only.

## 产品性能

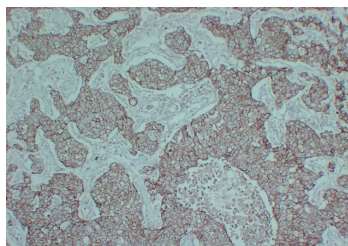
状态 ( Form )	Liquid
储存溶液 ( Buffer )	Liquid in PBS containing 50% glycerol, 0.5% BSA and 0.02% sodium azide.
存放条件 ( Storage )	Stored at -20°C. Avoid repeated freeze-thaw cycles.
浓度 ( Concentration )	1.51mg/mL
亚型 ( Isotype )	IgG1, Kappa
纯化方式 ( Purity )	The antibody was affinity-purified from mouse ascites by affinity-chromatography using specific immunogen.

## 应用

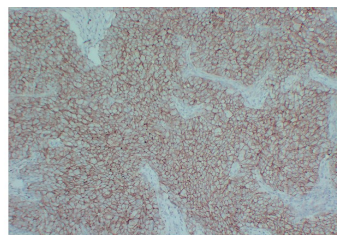
IHC-p: 1:100-1:500

## 产品实验图片

## E-Cadherin mouse monoclonal antibody



Immunohistochemical analysis of paraffin-embedded human Breast carcinoma. 1, E-Cadherin Antibody was diluted at 1:200 (4°C overnight). 2, EDTA pH 8.0 was used for antigen retrieval. 3, Secondary antibody was diluted at 1:200 (room temperature, 30min).



Immunohistochemical analysis of paraffin-embedded human Breast carcinoma. 1, E-Cadherin Antibody was diluted at 1:200 (4°C overnight). 2, EDTA pH 8.0 was used for antigen retrieval. 3, Secondary antibody was diluted at 1:200 (room temperature, 30min).

### 产品背景

Cadherin 1 (CDH1) Homo sapiens This gene encodes a classical cadherin of the cadherin superfamily. Alternative splicing results in multiple transcript variants, at least one of which encodes a preproprotein that is proteolytically processed to generate the mature glycoprotein. This calcium-dependent cell-cell adhesion protein is comprised of five extracellular cadherin repeats, a transmembrane region and a highly conserved cytoplasmic tail. Mutations in this gene are correlated with gastric, breast, colorectal, thyroid and ovarian cancer. Loss of function of this gene is thought to contribute to cancer progression by increasing proliferation, invasion, and/or metastasis. The ectodomain of this protein mediates bacterial adhesion to mammalian cells and the cytoplasmic domain is required for internalization. This gene is present in a gene cluster with other members of the cadherin family on chromosome 16.