

产品概述

产品名 (Product Name)	Cytokeratin 5 mouse monoclonal antibody
货号 (Catalog No.)	ATDA00103
种类 (Category)	Primary antibody
宿主 (Host)	Mouse
反应种属 (Species specificity)	This antibody detects endogenous levels of human Cytokeratin 5. Heat-induced epitope retrieval (HIER) TRIS-EDTA of pH8.0 was highly recommended as antigen repair method in paraffin section
应用实验 (Tested applications)	IHC-p, WB
克隆性 (Clonality)	Monoclonal
免疫原 (Immunogen)	Synthesized peptide derived from human Cytokeratin 5.
别名	Keratin, type II cytoskeletal 5, 58 kDa cytokeratin, Cytokeratin-5 (CK-5), Keratin-5 (K5), Type-II keratin Kb5
Uniprot ID	P13647

产品性能

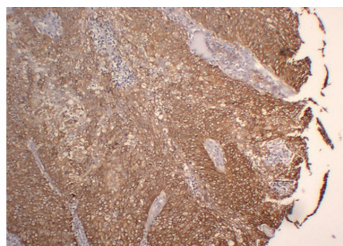
状态 (Form)	Liquid
储存溶液 (Buffer)	Liquid in PBS containing 50% glycerol, 0.5% BSA and 0.02% sodium azide.
存放条件 (Storage)	Stored at -20°C. Avoid repeated freeze-thaw cycles.
浓度 (Concentration)	1 mg/ml
亚型 (Isotype)	IgG2a, Kappa

应用

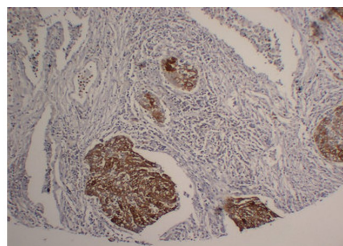
IHC-p: 1:100-1:500; WB: 1:500-1:2000

产品实验图片

Cytokeratin 5 mouse monoclonal antibody



Immunohistochemical analysis of paraffin-embedded Cervical squamous carcinoma. 1, Antibody was diluted at 1:200(4°C overnight). 2, TRIS-EDTA of pH8.0 was used for antigen retrieval. 3, Secondary antibody was diluted at 1:200(room temperature, 30min).



Immunohistochemical analysis of paraffin-embedded Squamous cell lung carcinoma. 1, Antibody was diluted at 1:200(4°C overnight). 2, TRIS-EDTA of pH8.0 was used for antigen retrieval. 3, Secondary antibody was diluted at 1:200(room temperature, 30min).

产品背景

Keratin 5(KRT5) Homo sapiens The protein encoded by this gene is a member of the keratin gene family. The type II cytokeratins consist of basic or neutral proteins which are arranged in pairs of heterotypic keratin chains coexpressed during differentiation of simple and stratified epithelial tissues. This type II cytokeratin is specifically expressed in the basal layer of the epidermis with family member KRT14. Mutations in these genes have been associated with a complex of diseases termed epidermolysis bullosa simplex. The type II cytokeratins are clustered in a region of chromosome 12q12-q13.