

产品概述

产品名 (Product Name)	BOB.1 mouse monoclonal antibody
货号 (Catalog No.)	ATDA00009
种类 (Category)	Primary antibody
宿主 (Host)	Mouse
反应种属 (Species specificity)	This antibody detects endogenous levels of human BOB.1. Heat-induced epitope retrieval (HIER) Citrate buffer of pH6.0 was highly recommended as antigen repair method in paraffin section
应用实验 (Tested applications)	IHC-p
克隆性 (Clonality)	Monoclonal
免疫原 (Immunogen)	Synthesized peptide derived from human BOB.1.
别名	POU domain class 2-associating factor 1,B-cell-specific coactivator OBF-1,BOB-1, OCA-B,OCT-binding factor 1
Uniprot ID	Q16633

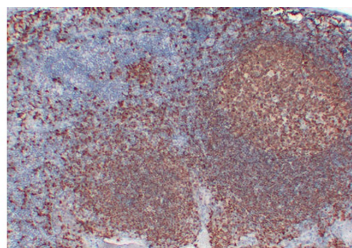
产品性能

状态 (Form)	Liquid
储存溶液 (Buffer)	Liquid in PBS containing 50% glycerol, 0.5% BSA and 0.02% sodium azide.
存放条件 (Storage)	Stored at -20°C.Avoid repeated freeze-thaw cycles.
浓度 (Concentration)	1 mg/ml
亚型 (Isotype)	IgG2a,Kappa

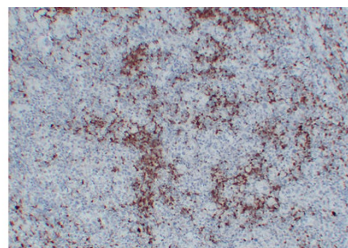
应用

IHC-p:1:100-1:500

产品实验图片



Immunohistochemical analysis of paraffin-embedded Fibroid. 1, Antibody was diluted at 1:200 (4°C overnight). 2, Tris-EDTA, pH8.0 was used for antigen retrieval. 3, Secondary antibody was diluted at 1:200 (room temperature, 30min).



Immunohistochemical analysis of paraffin-embedded Hodgkin lymphoma. 1, Antibody was diluted at 1:200 (4°C overnight). 2, Citrate buffer of pH6.0 was used for antigen retrieval. 3, Secondary antibody was diluted at 1:200 (room temperature, 30min).

产品背景

Disease: A chromosomal aberration involving POU2AF1/OBF1 may be a cause of a form of B-cell leukemia. Translocation t(3;11)(q27;q23) with BCL6, **function:** Transcriptional coactivator that specifically associates with either OCT1 or OCT2. It boosts the OCT1 mediated promoter activity and to a lesser extent, that of OCT2. It has no intrinsic DNA-binding activity. It recognizes the POU domains of OCT1 and OCT2. It is essential for the response of B-cells to antigens and required for the formation of germinal centers. **PTM:** Ubiquitinated; mediated by SIAH1 or SIAH2 and leading to its subsequent proteasomal degradation, **similarity:** Belongs to the POU2AF1 family, **tissue specificity:** B-cell specific.