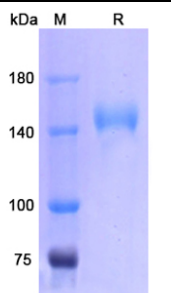


## 产品信息 ( Product Details )

### 概述 ( Summary )

英文全称	Recombinant Human CD22 protein ,C- Fc Tag
纯度 ( Purity )	>90% as determined by SDS-PAGE
内毒素 ( Endotoxin level )	Please contact with the lab for this information.
蛋白构建 ( Construction )	A DNA sequence encoding the human CD22(Met1-Arg687) was fused with the C-terminal Fc Tag
Accession #	P20273
表达宿主 ( Host )	Mammalian cells
种属 ( Species )	Homo sapiens (Human)
预测分子量 ( Predicted Molecular Mass )	103.75kDa
制剂 ( Formulation )	Supplied as solution form in PBS or lyophilized from PBS .
运输方式 ( Shipping )	In general, proteins are provided as lyophilized powder/frozen liquid. They are shipped out with dry ice/blue ice unless customers require otherwise.
稳定性&储存 ( Stability &Storage )	Use a manual defrost freezer and avoid repeated freeze thaw cycles.  Store at 2 to 8 °C for one week .  Store at -20 to -80 °C for twelve months from the date of receipt.
复溶 ( Reconstitution )	Reconstitute in sterile water for a stock solution.A copy of datasheet will be provided with the products, please refer to it for details.

### 电泳图 ( SDS-PAGE image )



SDS-PAGE Image

### 背景 ( Background )

分子别名 ( Alternative Names )	CD22,SIGLEC2,BL-CAM,SIGLEC-2,Siglec2,SIGLEC2FLJ22814
参考文献 ( References )	Li, Anwar, Fan, Juang, Lin, Chang, Kawade, Chen, Chen, Tan, Lin (2020)

Catalog Number:ATMP00209HU

## Recombinant Human CD22 protein ,C- Fc Tag

Fluorescence "Turn-on" Lectin Sensors Fabricated by Ligand-Assisted Labeling

Probes for Detecting Protein-Glycoprotein Interactions Biomacromolecules 21(2)

815-824

### Note

---

For research use only .

