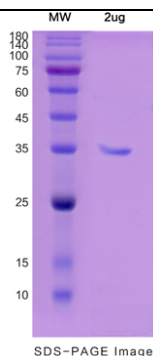


## 产品信息 ( Product Details )

### 概述 ( Summary )

英文全称	Recombinant Human EPCAM protein ,C- His Tag
纯度 ( Purity )	>90% as determined by SDS-PAGE
内毒素 ( Endotoxin level )	Please contact with the lab for this information.
蛋白构建 ( Construction )	A DNA sequence encoding the human EPCAM(Met1-Lys265) was fused with the C-terminal His Tag
Accession #	P16422
表达宿主 ( Host )	Mammalian cells
种属 ( Species )	Homo sapiens (Human)
预测分子量 ( Predicted Molecular Mass )	29.15kDa
制剂 ( Formulation )	Supplied as solution form in PBS or lyophilized from PBS .
运输方式 ( Shipping )	In general, proteins are provided as lyophilized powder/frozen liquid. They are shipped out with dry ice/blue ice unless customers require otherwise.
稳定性&储存 ( Stability &Storage )	Use a manual defrost freezer and avoid repeated freeze thaw cycles.  Store at 2 to 8 °C for one week .  Store at -20 to -80 °C for twelve months from the date of receipt.
复溶 ( Reconstitution )	Reconstitute in sterile water for a stock solution.A copy of datasheet will be provided with the products, please refer to it for details.

### 电泳图 ( SDS-PAGE image )



### 背景 ( Background )

分子别名 ( Alternative Names )	EPCAM,TACSTD1,TROP1,CD326,DIAR5,EGP2,EGP314,EGP40,ESA,GA733-2, HNPPC8,HNPPC-8,KS1/4,KSA,M4S1,MIC18,MK1
----------------------------	---

**参考文献 ( References )**

Liu, Yang, Liang, Chen, Yang, Liu, Yao (2020) Increased expression of epithelial cell adhesion molecule and its possible role in epithelial-mesenchymal transition in endometriosis The journal of obstetrics and gynaecology research ()

**Note**

---

For research use only .

